

Product Specification

Single color LED 4G control card

HD-G66

V7.0 20220308

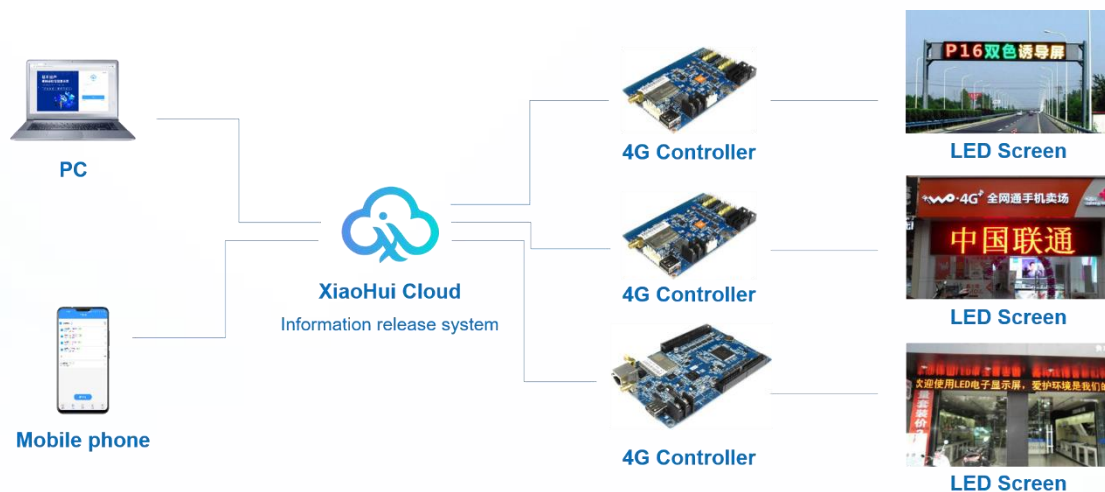
I . Overview

HD-G66 is a 4G control card for door headline screens, storefront signs, traffic guidance and other occasions, and supports remote update programs on the XiaoHui Cloud. In addition, it also supports USB interface to update programs. G66 is easy to operate, rich in effects, and supports simple pictures, texts, clocks, timings, etc.

Application software: HD2020, XiaoHui Cloud.

II . Connection diagram

G66 is connected to XiaoHui Cloud through the 4G network, and the program can be updated through XiaoHui Cloud remotely.



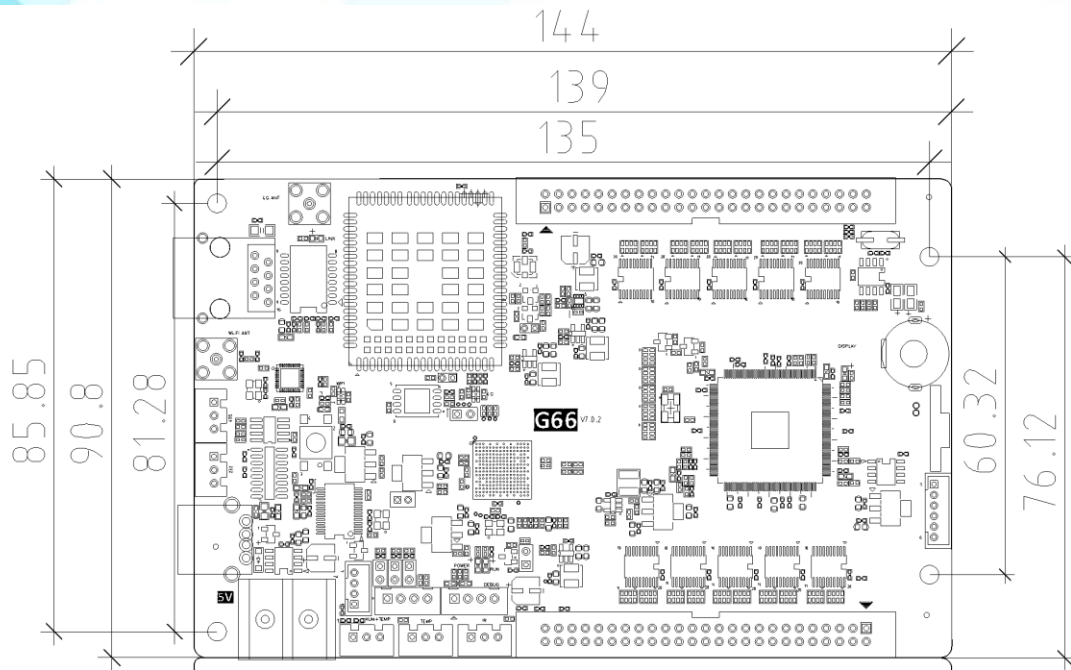
III. Product Features

1. Integrated 4G module, the transmission speed is faster and more stable;
2. Support program borders, area borders, and custom borders;
3. Support a variety of text special effects to meet most application scenarios;
4. Support font hollow, stroke and other designs;
5. Support up to 20 content areas, free typesetting;
6. Support external temperature, humidity, brightness and other external sensors.

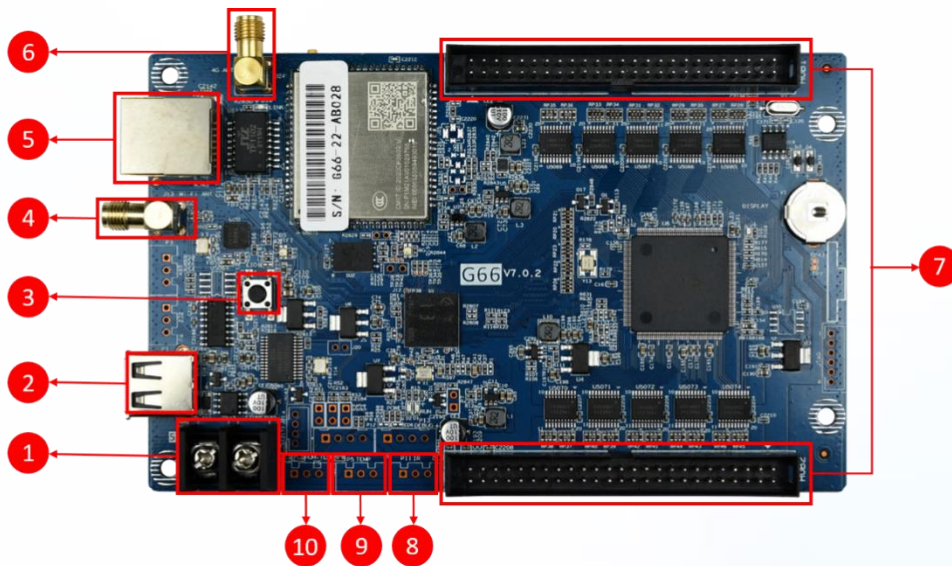
IV. function list

Function	Parameters
Control range	Single Color: 2048*512, Widest 8192, highest 512, Dual-color 1024*512; Colorful 1344*256
FLASH Capacity	4M Byte
Communication	U-Disk、 4G
Program Quantity	1000
Area Quality	20 areas with separate zone, and separated special effects and border
Display Showing	Text, Animation words, 3DText, Graphics (pictures, SWF), Excel, Timing, Temperature (temperature and humidity), Count, Lunar calendar
Display	Sequence display, button switch, remote control
Clock function	<ol style="list-style-type: none"> 1、 Support Digital Clock/ Dial Clock / Lunar Time/ 2、 Countdown /Count up, Button Countdown / Count up 3、 The font、 size、 color and position can be set freely 4、 Support multiple time zones
Extended Equipment	Temperatures、 Humidity、 IR Remoter、 Photosensitive sensors、 etc.
Automatic switch screen	Support timer switch machine
bright adjustment	Support three brightness adjustment modes: manual adjustment, automatic adjustment, adjustment by time period
Working power	3 watts

V. Product Size



VI. Interface Description



- ① Power socket: 5V DC power supply terminal;
- ② USB interface: insert U disk, update parameters and programs;
- ③ Test button: test the display module;
- ④ Wi-Fi antenna interface: connect an external Wi-Fi antenna;
- ⑤ Network port: connect the network cable to update the program directly through the

computer or local area network;

⑥4G antenna interface: connect an external 4G antenna;

⑦Universal HUB interface: install the HUB adapter board and connect the LED display module;

⑧P11 interface: connect infrared remote control probe;

⑨P5 interface: connect the temperature/humidity sensor and display it on the LED screen;

⑩Temperature and humidity sensor interface: connect the temperature/humidity sensor and display it on the LED display.

VII. Technical Parameters

	最小值	典型值	最大值
Rated voltage (V)	4.2	5.0	5.5
Storage temperature (°C)	-40	25	105
Work environment temperature (°C)	-40	25	80
Work environment humidity (%)	0.0	30	95
N.W. (kg)			
certified product	CE、FCC、RoHS		

Precautions

1. To ensure the time storage of the control card during normal operation, please ensure that the battery on the control card is not loose;
2. In order to ensure the long-term stable operation of the system, please use the standard 5V DC power supply voltage as much as possible;
3. There may be slight differences between the pictures in the specification and the actual product. The actual product shall prevail. If you have any questions, please contact the salesperson or technical support.